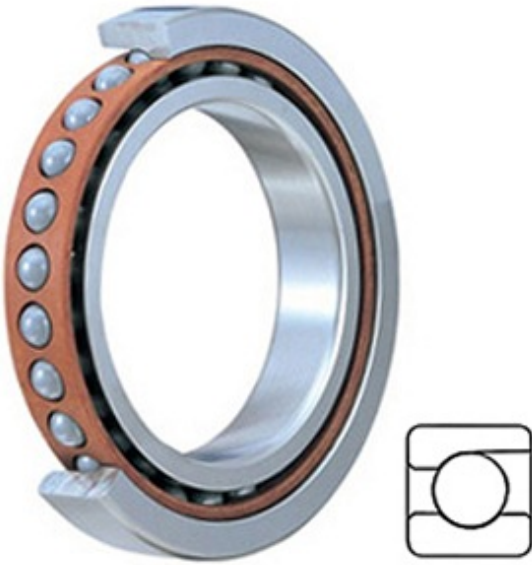




JOP BEARING MFG. CORP.

2MM9116WI TIMKEN Spherical Roller Bearings Brass Cage

Bearing No. 2MM9116WI



2MM9116WI Bearing 2D drawings and 3D CAD models

Category	Precision Ball Bearings
Inventory	0.0
Manufacturer Name	TIMKEN
Minimum Buy Quantity	N/A
Weight	0.922
Product Group	B04270
Enclosure	Open
Precision Class	ABEC 7 ISO P4
Material - Ball	Steel
Number of Bearings	1 (Single)
Contact Angle	15 Degree
Preload	None
Raceway Style	1 Rib Outer Ring
Cage Material	Phenolic
Rolling Element	Ball Bearing
Flush Ground	No
Inch - Metric	Metric
Other Features	Single Row Angular Contact Super High Precision
Long Description	80MM Bore; 125MM Outside Diameter; 22MM Width; Open Enclosure; ABEC 7 ISO P4 Precision; Steel Ball Material; 1 (Single) Bearings; 15 Degree Contact Angle; Phenolic Cage Material; 1 Rib Outer



JOP BEARING MFG. CORP.

	Ring Ra
Category	Precision Ball Bearings
UNSPSC	31171531
Harmonized Tariff Code	8482.10.50.28
Noun	Bearing
Keyword String	Angular Contact Ball
Manufacturer URL	http://www.timken.com
Manufacturer Item Number	2MM9116WI
Weight / LBS	2.03
d	3.15 Inch 80 Millimeter
B	0.866 Inch 22 Millimeter
D	4.921 Inch 125 Millimeter
d - Bore	80 mm
D - Outer Diameter	125 mm
Bearing Width	22 mm
do - Ball Diameter	13.493750 mm
C0 - Static Radial Rating	55200 N
Ce - Dynamic Radial Rating ¹	64900 N
Limiting Speed (Grease)	10300 rpm
Limiting Speed (Oil)	20600 rpm
Ball Type	STEEL
Cage Type	CR - Phenolic Outer Land Riding Cage
Bearing Weight	0.859 Kg
Design Units	METRIC
Full Timken Part Number	2MM9116WICR
R - Inner Ring To Clear Radius ²	1.0 mm
r - Outer Ring To Clear Radius ³	1.0 mm
da - Inner Ring Backing Diameter	88.500 mm
Da - Outer Ring Backing	116.5 mm



JOP BEARING MFG. CORP.

Diameter	
----------	--