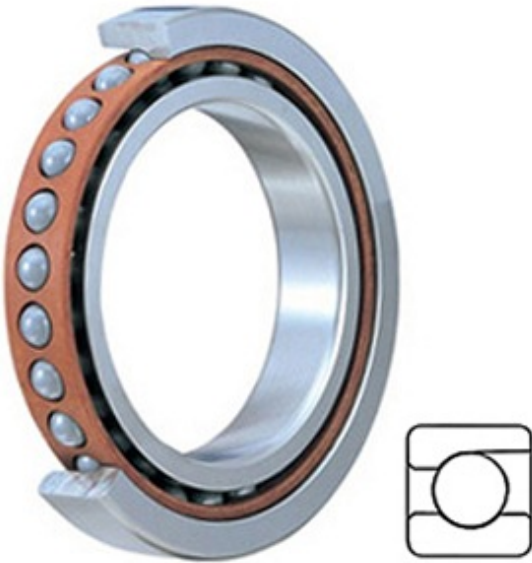




JOP BEARING MFG. CORP.

2MM9115WI TIMKEN Spherical Roller Bearings Brass Cage

Bearing No. 2MM9115WI



2MM9115WI Bearing 2D drawings and 3D CAD models

Category	Precision Ball Bearings
Inventory	0.0
Manufacturer Name	TIMKEN
Minimum Buy Quantity	N/A
Weight	0.672
Product Group	B04270
Enclosure	Open
Precision Class	ABEC 7 ISO P4
Material - Ball	Steel
Number of Bearings	1 (Single)
Contact Angle	15 Degree
Preload	None
Raceway Style	1 Rib Outer Ring
Cage Material	Phenolic
Rolling Element	Ball Bearing
Flush Ground	No
Inch - Metric	Metric
Other Features	Single Row Angular Contact Super High Precision
Long Description	75MM Bore; 115MM Outside Diameter; 20MM Width; Open Enclosure; ABEC 7 ISO P4 Precision; Steel Ball Material; 1 (Single) Bearings; 15 Degree Contact Angle; Phenolic Cage Material; 1 Rib Outer



JOP BEARING MFG.CORP.

	Ring Ra
Category	Precision Ball Bearings
UNSPSC	31171531
Harmonized Tariff Code	8482.10.50.28
Noun	Bearing
Keyword String	Angular Contact Ball
Manufacturer URL	http://www.timken.com
Manufacturer Item Number	2MM9115WI
Weight / LBS	1.47
B	0.787 Inch 20 Millimeter
D	4.528 Inch 115 Millimeter
d	2.953 Inch 75 Millimeter
d - Bore	75 mm
D - Outer Diameter	115.000 mm
Bearing Width	20 mm
do - Ball Diameter	11.906250 mm
C0 - Static Radial Rating	43500 N
Ce - Dynamic Radial Rating ¹	51600 N
Limiting Speed (Grease)	11000 rpm
Limiting Speed (Oil)	22000 rpm
Ball Type	STEEL
Cage Type	CR - Phenolic Outer Land Riding Cage
Bearing Weight	0.638 Kg
Design Units	METRIC
Full Timken Part Number	2MM9115WICR
R - Inner Ring To Clear Radius ²	1.0 mm
r - Outer Ring To Clear Radius ³	1.0 mm
da - Inner Ring Backing Diameter	82.700 mm
Da - Outer Ring Backing	107.300 mm



JOP BEARING MFG.CORP.

Diameter	
----------	--