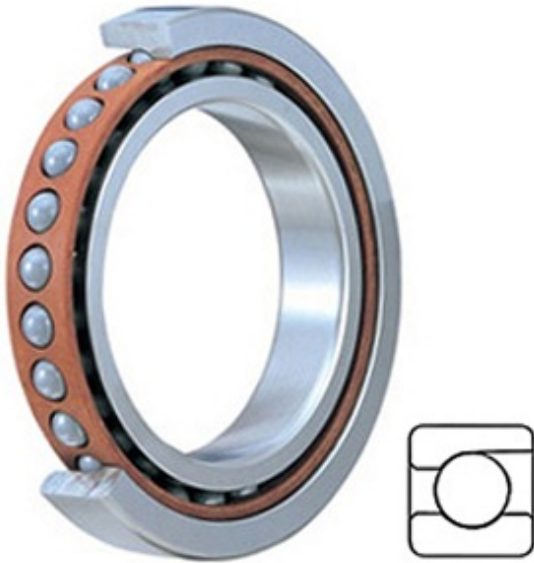




JOP BEARING MFG. CORP.

2MM9114WI TIMKEN Spherical Roller Bearings Brass Cage

Bearing No. 2MM9114WI



2MM9114WI Bearing 2D drawings and 3D CAD models

Category	Precision Ball Bearings
Inventory	2.0
Manufacturer Name	TIMKEN
Minimum Buy Quantity	N/A
Weight	0.631
Product Group	B04270
Enclosure	Open
Precision Class	ABEC 7 ISO P4
Material - Ball	Steel
Number of Bearings	1 (Single)
Contact Angle	15 Degree
Preload	None
Raceway Style	1 Rib Outer Ring
Cage Material	Phenolic
Rolling Element	Ball Bearing
Flush Ground	No
Inch - Metric	Metric
Other Features	Single Row Angular Contact Super High Precision
Long Description	70MM Bore; 110MM Outside Diameter; 20MM Width; Open Enclosure; ABEC 7 ISO P4 Precision; Steel Ball Material; 1 (Single) Bearings; 15 Degree Contact Angle; Phenolic Cage Material; 1 Rib Outer



JOP BEARING MFG.CORP.

	Ring Ra
Category	Precision Ball Bearings
UNSPSC	31171531
Harmonized Tariff Code	8482.10.50.28
Noun	Bearing
Keyword String	Angular Contact Ball
Manufacturer URL	http://www.timken.com
Manufacturer Item Number	2MM9114WI
Weight / LBS	1.39
D	4.331 Inch 110 Millimeter
B	0.787 Inch 20 Millimeter
d	2.756 Inch 70 Millimeter
d - Bore	70 mm
D - Outer Diameter	110 mm
Bearing Width	20 mm
do - Ball Diameter	11.906250 mm
C0 - Static Radial Rating	40700 N
Ce - Dynamic Radial Rating ¹	50300 N
Limiting Speed (Grease)	11700 rpm
Limiting Speed (Oil)	23400 rpm
Ball Type	STEEL
Cage Type	CR - Phenolic Outer Land Riding Cage
Bearing Weight	0.604 Kg
Design Units	METRIC
Full Timken Part Number	2MM9114WICR
R - Inner Ring To Clear Radius ²	1.0 mm
r - Outer Ring To Clear Radius ³	1.0 mm
da - Inner Ring Backing Diameter	77.700 mm
Da - Outer Ring Backing	102.400 mm



JOP BEARING MFG.CORP.

Diameter	
----------	--