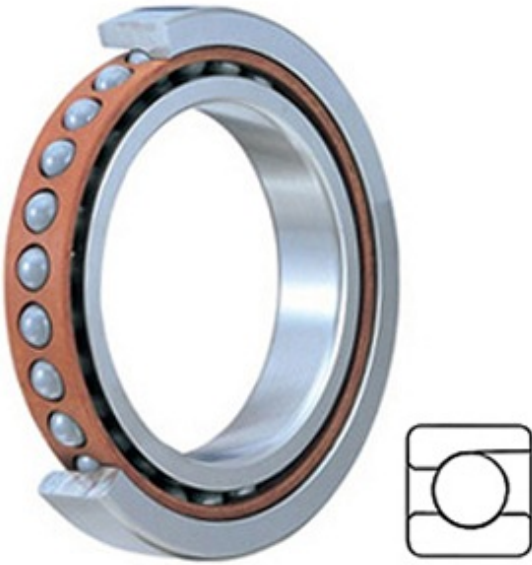




# JOP BEARING MFG. CORP.

## 2MM9113WI TIMKEN Spherical Roller Bearings Brass Cage

Bearing No. 2MM9113WI



2MM9113WI Bearing 2D drawings and 3D CAD models

Category	Precision Ball Bearings
Inventory	0.0
Manufacturer Name	TIMKEN
Minimum Buy Quantity	N/A
Weight	0.458
Product Group	B04270
Enclosure	Open
Precision Class	ABEC 7   ISO P4
Material - Ball	Steel
Number of Bearings	1 (Single)
Contact Angle	15 Degree
Preload	None
Raceway Style	1 Rib Outer Ring
Cage Material	Phenolic
Rolling Element	Ball Bearing
Flush Ground	No
Inch - Metric	Metric
Other Features	Single Row   Angular Contact   Super High Precision
Long Description	65MM Bore; 100MM Outside Diameter; 18MM Width; Open Enclosure; ABEC 7   ISO P4 Precision; Steel Ball Material; 1 (Single) Bearings; 15 Degree Contact Angle; Phenolic Cage Material; 1 Rib Outer



## JOP BEARING MFG. CORP.

	Ring Ra
Category	Precision Ball Bearings
UNSPSC	31171531
Harmonized Tariff Code	8482.10.50.28
Noun	Bearing
Keyword String	Angular Contact Ball
Manufacturer URL	<a href="http://www.timken.com">http://www.timken.com</a>
Manufacturer Item Number	2MM9113WI
Weight / LBS	1.01
d	2.559 Inch   65 Millimeter
D	3.937 Inch   100 Millimeter
B	0.709 Inch   18 Millimeter
d - Bore	65 mm
D - Outer Diameter	100 mm
Bearing Width	18 mm
do - Ball Diameter	10.318750 mm
C0 - Static Radial Rating	32600 N
Ce - Dynamic Radial Rating <sup>1</sup>	39800 N
Limiting Speed (Grease)	12700 rpm
Limiting Speed (Oil)	25400 rpm
Ball Type	STEEL
Cage Type	CR - Phenolic Outer Land Riding Cage
Bearing Weight	0.435 Kg
Design Units	METRIC
Full Timken Part Number	2MM9113WICR
R - Inner Ring To Clear Radius <sup>2</sup>	1.0 mm
r - Outer Ring To Clear Radius <sup>3</sup>	1.0 mm
da - Inner Ring Backing Diameter	72.100 mm
Da - Outer Ring Backing	93.200 mm



# JOP BEARING MFG. CORP.

Diameter	
----------	--